



MALE  
43Y, # 185

FEMALE  
22Y, # 183

FEMALE  
27Y, # 184



# VMS & VCA SOLUTIONS



# AGENDA

1

Company Profile

2

Project References

3

VMS & VCA Explained

4

3<sup>rd</sup> Party Integration Options

5

Netavis VMS Modules

6

VMS & VCA Features

7

AI Face Recognition

8

Smart Data Warehouse Features

9

Security Cockpit

10

Conclusion



# EXECUTIVE SUMMARY



## Proven Technology

- MOI Prisons, KSA
  - 8,500 Cameras
  - Distributed Across the Country
- Clock Tower Complex, KSA
  - 15,400 Cameras
  - 260 Concurrent Users
- City Surveillance, Eastern Europe
  - 3,000 cameras
  - Project-specific failover concept



## A Single Integrated Software Platform

- Open Video Management System (VMS)
- iCAT Video Analytics Included in VMS
- Event Database platform for Dashboard Visualization and Management Reports



## One-Stop Solution Provider

- Video Management System & Video Analytics
- Server and Client Hardware
- Local, Regional and Factory Sales and Technical Support

# COMPANY PROFILE



Pioneer in server-based IP video surveillance and integrated video analytics



About 15,000 installations over 124,000 sold licenses  
1 to 15,000 cameras per installation



Customers in industries such as retail, government, public administration, banks, transportation, manufacturing industry and many more



Software easily adaptable to various languages, currently available in over 20 languages, including Arabic

Headquarters in Vienna, Austria

Development in Budapest, Hungary

Delivers products and services through solution partners and distributors

Key focus on Europe and Middle East

# AGENDA

1

Company Profile

2

Project References

3

VMS & VCA Explained

4

3<sup>rd</sup> Party Integration Options

5

Netavis VMS Modules

6

VMS & VCA Features

7

AI Face Recognition

8

Smart Data Warehouse Features

9

Security Cockpit

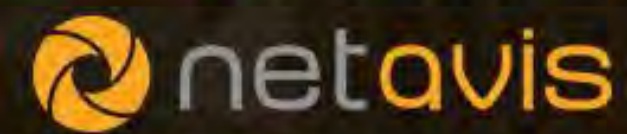
10

Conclusion



# PRESTIGIOUS PROJECTS





Abraj Al-Bait Tower (Clock Tower), 15,000+ HD IP CCTV Cameras





## Security of Critical Buildings

- Region: Middle East
- Cameras: 8,500
- 5 sites
- Indoor and outdoor
- 4 petabyte external storage
- Integration with Siemens SiPort (access control)
- High availability (clustering)



## Security of Critical Buildings

- Region: Middle East
- Cameras: 15,400
- Installed in year: ongoing
- Partner: Panasonic
- 4 sites, 200 clients
- Indoor and outdoor
- SNAP integration



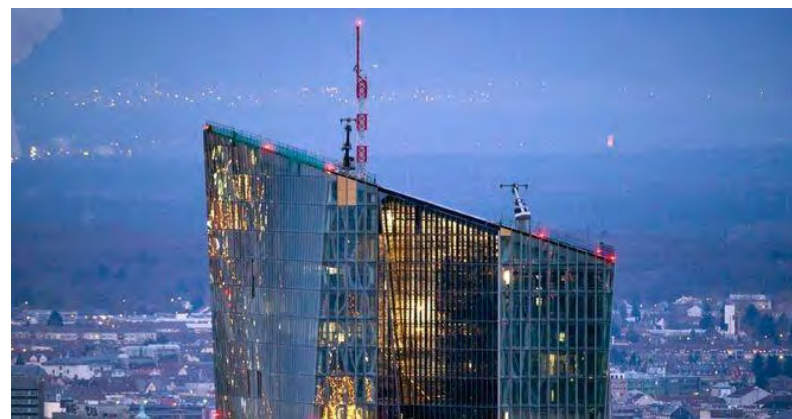
## Ministry of Justice

- Region: Central Eastern Europe
- Cameras: 3,100
- Installed in year: 2009
- 300 sites
- OEM version of NETAVIS Observer



## City Surveillance

- Region: Central Eastern Europe
- Cameras: 3,000
- Installed in year: 2011
- Encryption (HTTPS, AES)
- Dual streaming video analytics
- Project-specific failover concept



## Bank – Security of Branches

- Region: Central Eastern Europe
- Cameras: 1,000
- Installed in year: 2006
- 120 branches connected
- Integration of alarm system
- Live monitoring at the HQ
- Distributed update



## NGHA – Security of Healthcare

- Region: Middle East
- Cameras: 2,600
- Installed in year: 2014
- Integration of alarm system
- Live monitoring at the HQ
- Distributed update



**Ministry of Interior**  
Kingdom of Saudi Arabia

Ministry of Interior Saudi Arabia



NGHA Madinah



King Saud University Riyadh



Civil Defense, Makkah



**ALPHA BANK**

Alpha Bank Serbia



**PORT OF  
TALLINN**

Port of Tallinn



Fairmont Hotel Group



Movenpick Hotel



Zamzam Hotel



Raffles Hotel



Swiss Otel



Mobistar Concept Stores



UNITED COLORS  
OF BENETTON.

Benetton Megastores



Copenhagen Airport



Nippon Express



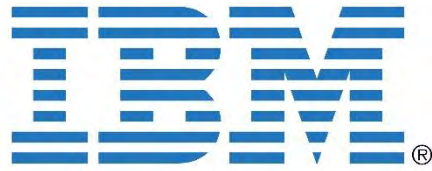
SOL Palvelut



Linz AG



TNT Linz



IBM



DHL



IKEA



Jamie Oliver Restaurants



Dnata



Ministry of Justice Romania

# SELECTION OF REFERENCES

## Retail



## Government



## Utility



## Bank



## Health



## Transport



## Corporate



# AGENDA

- 1 Company Profile
- 2 Project References
- 3 VMS & VCA Explained
- 4 3<sup>rd</sup> Party Integration Options
- 5 Netavis VMS Modules
- 6 VMS & VCA Features
- 7 AI Face Recognition
- 8 Smart Data Warehouse Features
- 9 Security Cockpit
- 10 Conclusion





# WHAT SHOULD YOU HAVE IN A VMS AND VCA

1

Scalable, stable and reliable

2

Native analytics

3

Open platform for different CCTV suppliers / third party systems

4

Easy to integrate with third party systems

5

Bandwidth optimization

6

Archiving security

7

Connectivity health check

8

Smooth and easy operation

9

Behavioral analysis

10

Backend optimization

11

Artificial intelligence for informative decisions making

12

Machine learning

# TYPICAL PURPOSE OF ANALYTICS

1

Know the number of visitors

2

Organize automated access control of people

3

Track the movements of suspicious individuals

4

Find people in the video stream or archive using the images of their faces

5

Observe objects left unattended

6

Raise alarm on accumulation of too many people

7

Detection of CCTV camera malfunction

8

Cover a larger area of observation with fewer cameras

9

Fever Screening

10

Social Distancing

11

Reduce cost of the video surveillance system

12

Accumulate business intelligence

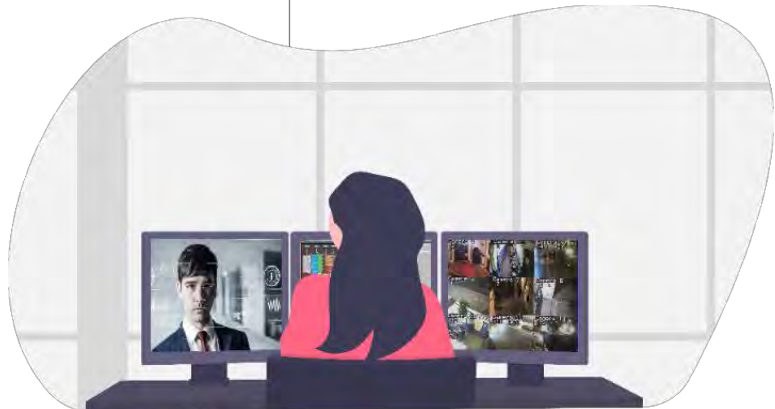
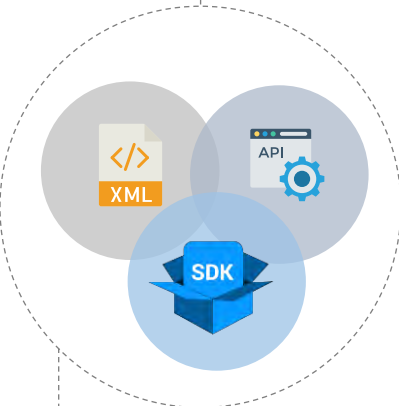
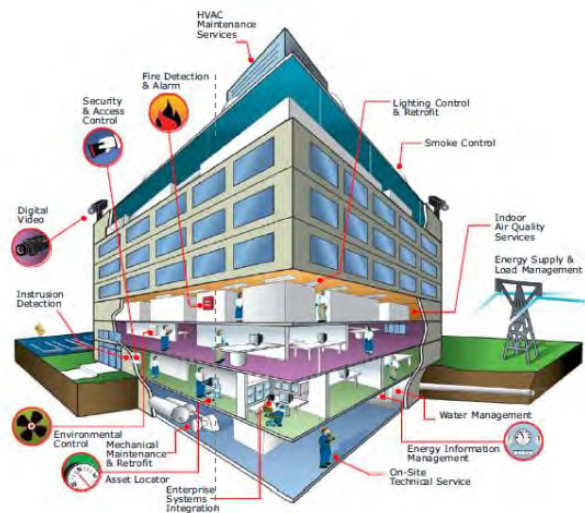
# AGENDA

- 1 Company Profile
- 2 Project References
- 3 VMS & VCA Explained
- 4 3<sup>rd</sup> Party Integration Options
- 5 Netavis VMS Modules
- 6 VMS & VCA Features
- 7 AI Face Recognition
- 8 Smart Data Warehouse Features
- 9 Security Cockpit
- 10 Conclusion



# UNIFIED DASHBOARD

# 3<sup>rd</sup> PARTY SYSTEM INTEGRATION



CCTV System

Access Control System

BMS System

Burglar Alarm System

Fire Alarm System

# AGENDA

- 1 Company Profile
- 2 Project References
- 3 VMS & VCA Explained
- 4 3<sup>rd</sup> Party Integration Options
- 5 Netavis VMS Modules
- 6 VMS & VCA Features
- 7 AI Face Recognition
- 8 Smart Data Warehouse Features
- 9 Security Cockpit
- 10 Conclusion





# ONE PLATFORM – THREE COMPONENTS



NETAVIS Observer: Linux-based video management system

iCAT: Versatile video analytics solution integrated into NETAVIS Observer

sMart: Data warehouse that stores, processes and visualizes data from Observer, iCAT, and other sensors (e.g. 3D and TOF sensors)

**NETAVIS  
OBSERVER**  
Video Management System

**iCAT**  
Video  
Analytics

**sMart**  
Data Warehouse

**Security  
Cockpit**



# NETAVIS OBSERVER VIDEO MANAGEMENT SOFTWARE



## Edition Table

Features & Modules / Edition	Basic	eXtended	Enterprise	Licensed by
Max number of cameras	64	128	unlimited	Camera
Max number of concurrent users	10	20	unlimited	User
Max number of interconnected servers	unlimited	Unlimited	unlimited	Server
Max number of I/O Devices	unlimited	Unlimited	unlimited	Server
Smart Motion Detection	●	●	●	Server
Event Management	●	●	●	Server
ONVIF Profile S	●	●	●	Camera
I/O Device Administration for Easy Integration	●	●	●	Server
Centralized Management with Extensive Management Reports	●	●	●	Server
Multilevel Administration for Advance Security	●	●	●	Server
SDK (.NET/Java) for 3rd Party Integration	●	●	●	Server
Rule Administration for Automated Actions	●	●	●	Server
Mobile Client	●	●	●	User
Archive Encryption	●	●	●	Server
Active Directory Integration	●	●	●	Server
SNMP	●	●	●	Server
ABS Bandwidth Management	○	○	●	Camera
Extensive iCAT Video Analytics with AI and 3rd Party Integration	○	○	○	Camera
iCAT Number Plate Recognition Including Arabic	○	○	○	Lane
iCAT Face Detection with Age, Sex and Engagement Time	○	○	○	Camera
Highly Advance Video Wall Controls	-	○	○	Client
Video4Web	○	○	○	Session
Layout Navigation with Actual Floor Plans and Maps	●	●	●	User
SNAP XML Interface for 3rd Party Integration	○	○	○	Session
SNAP URL Interface for 3rd Party Integration Including other VMS, PSIM etc.	○	○	○	Session
NETAVIS sMART Data Warehouse for Data & Business Intelligence	○	○	○	Sensor/User
NETAVIS Security Cockpit with Substantial Security and Management Dashboards	○	○	○	System

Legend: ● included, ○ optional, - not supported

## Observer 5.0.2

### Security related issues

- Permissive HTTP Strict Transport Security Policy Detection
- jQuery Prototype Pollution
- Admin menu: Add SMTP settings and support for more options (incl. authentication)

### New cameras

- Extend ONVIF driver to support H.265
- Integrated Honeywell 30 series cameras



## Observer 5.0.1

### List of enhancements

- I/O devices: Implement Axis Generic I/O driver
- SNAP URL/XML & Java SDK: functions to update ANPR lists
- Admin Console: Option to disable HTTP access
- Admin Console: Display CentOS version
- Admin Console: [22] Show network details: Include MAC address
- Support updates from USB sticks
- Updates: Add check whether /Images1 exists on first hard drive before an update is executed
- Add XML option to reduce the Hella polling time

### New cameras

- Integrated Axis generic camera driver
- Integrated Hikvision generic camera driver

## Observer 5.0.0

### List of enhancements

- Renewal of camera admin
- Camera admin's pages to be replaced with table where multiple select, multiple setting and sorting is available for cameras and it's settings
- Convert existing camera admin into new
- Combo boxes to be replaced with text fields for video parameters, image size, frame rate
- Camera discovery wizard to be changed: easier selection, info fields to move into camera admin table
- Support multi-select for camera/group movement and delete
- Excel import allow cameras already existing in Observer
- Consolidation: removing "The 'I/O Control'" and "Video parameters" panels from camera admin (as the first one is accessible from I/O admin, and the other one is unused)
- Allow to add cameras to an NCS camera groups directly from the NUS
- Update Face Detection SDK to latest version
- Add support for Attention and Dwell time
- GUI changes: Parameter fields for Attention and Dwell time

Contd...



## Observer 5.0.0

### List of enhancements

- Events: Eliminate face detection event, but put attention and dwell time parameters into age & gender event
- Implement H.265 support
- H.265 support in Axis drivers (models: M2026-LE, M3106-L MKII, M3106-LVE MKII, M3106-L)
- H.265 support in Vantage drivers (model: VP-NC5394P, VV-NC9425D)
- H.265 support in Generic RTSP and ONVIF Profile S drivers Installation, Operation System
- Update the installation base system to CentOS 7.5
- Adapt install.sh to the new CentOS 7 environment (INSTALL only)
- Update the shell scripts to support CentOS 7
- Update the Java part to support CentOS 7
- Additional useful error messages in the course of install
- Protect grub with password
- Define new partitioning scheme, handle most storage configurations automatically
- UEFI support for bundled version
- Rpm packages for CentOS 7
- Installing Observer from a USB stick
- Support for ONVIF Profile S conformant devices
  
- Security related issues
- X-Frame-Options Header
- Remove insecure Transportation Security Protocol (TLS 1.0)
- Updated Tomcat
- Cookies to be marked as Http Only
- Disable weak ciphers
- Network Time Protocol Daemon (ntpd) upgrade to version 4.2.7-p26

- Restrict Network Time Protocol (NTP) mode 6 queries
- HTTP/HTTPS: filter metacharacters for cross site scripting
- HTTP/HTTPS: application error messages to be logged
- HTTP/HTTPS: password field submitted through POST instead of GET
- HTTP/HTTPS: Javascript library updated
- Weak Ssh algorithms disabled

### Various Improvements

- Camera Admin: Add fields for additional GDPR-information (responsible person and use of camera)
- Java version change to latest IBM Java 8
- iCAT Tripwire: Added arrow to indicate direction of counting
- Add System Event: configured recording period cannot be reached due to insufficient disk space
- Online Monitor window popup if an event occurs
- License allocation on license server's host admin
- Added PTZ privileges to user groups
- New Rule Admin action: show in view
- OpenJDK 11 support on client side
- Netavis AD users keep their IDs (and configurations) if AD connection was lost and recovered
- Simplifying the code: Store events in one table instead of many

### New cameras

- Integrated Vantage cameras with a generic driver (model: VP-NC5394P, VV-NC9425D)
- Integrated ONVIF Profile S driver

### Bugs fixed

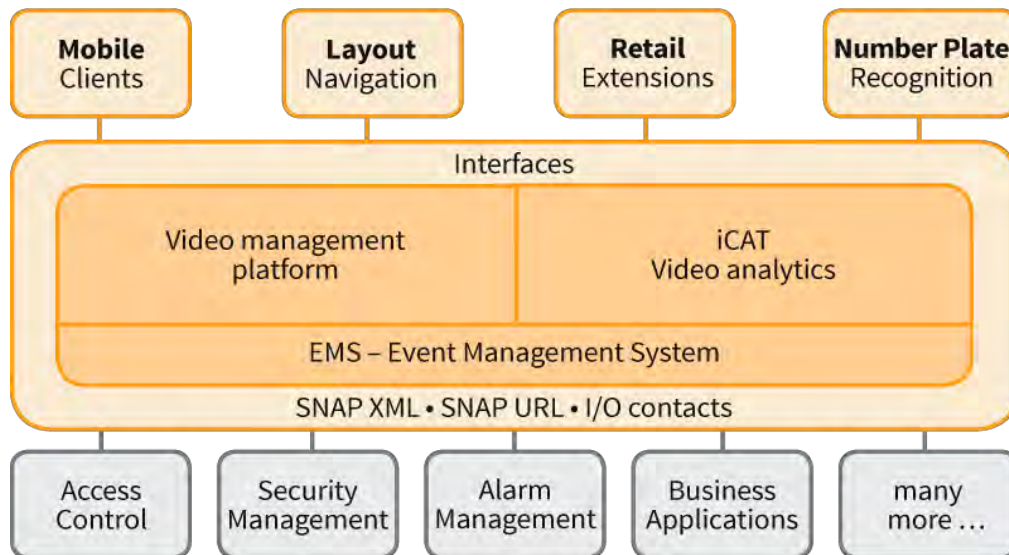
- Install fails if DNS configured incorrectly
- Recording interval extended up to 1 pic / 5 minutes
- Minimal face detection size editor on Java 10
- No fatal dumps in case of archive encryption and multi camera SAFE export
- Camera access rights synced to slave NUS in sync group for AD user
- Added IO Device values in automatic export
- Layer Navigation Tool can start via https using Web Start on JAVA 8 and 10
- Stream in online monitor after restoring old system backup
- System Backup restore modifies the DB schema to latin1 from utf8
- Exception occurs when pushing 'cancel' button for modifying user group's privileges
- Online monitor stream not jerky when motion happens
- Import of 270+ cameras are no longer slow

# OBSERVER VIDEO MANAGEMENT



## VIDEO MANAGEMENT PLATFORM BASED ON LINUX, WITH THE MAIN ADVANTAGES

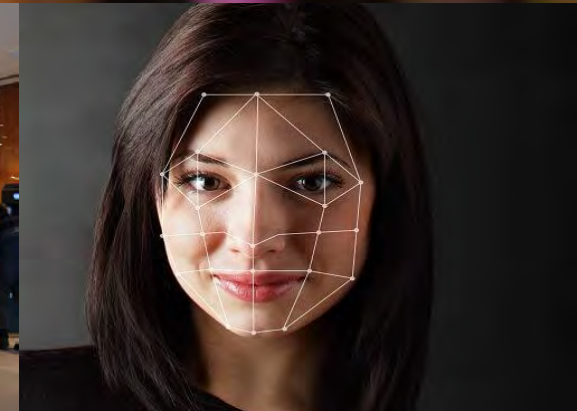
- Cost (included in bundled (with OS)NETAVIS Version) – Unbundled without OS
- Secure Linux OS CentOS Ver 7.5
- Support of NETAVIS addresses OS questions as well



- High Usability by integration with NETAVIS iCAT Video Analytics in one common application
- ONVIF Profile S, native camera vendor integrations, Generic RTSP Driver
- Interfaces for fast implementation and deployment of 3<sup>rd</sup> party integrations
- Unlimited System Size (currently up to 15,400 cameras in existing systems)
- Scalability, system size of VMS and analytics defined by license key

# netavis VIDEO CONTENT ANALYTICS

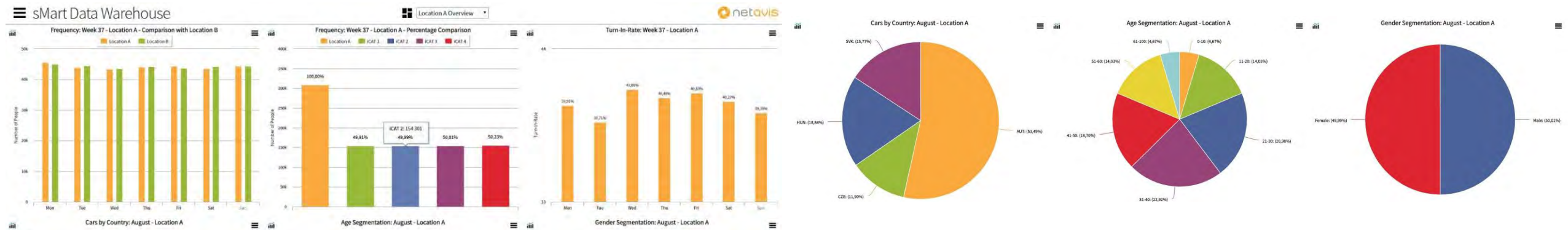
- **iCAT Video Analytic Bundle**
  - Smart Motion Detection
  - Object Counting
  - Privacy Masking
  - Camera Sabotage
  - Object Entering/Leaving
  - Directional Alarms
  - Object Detection
  - Object Starting Stopping, Loitering
  - Heat Maps/Crowd Density
- **3D/4D Sensor Integration (Optional)**
  - Enterprise People Counting
- **Face Detection (Optional)**
  - Gender Segmentation
  - Age Segmentation
  - Engagement Level
- **ANPR Arabic Number Plate Recognition (Optional)**
- **Enterprise Facial Recognition (Optional)**



# sMart DATA WAREHOUSE



- Collects and stores data from diverse data sources, including iCAT Video Analytics, and transforms it into key performance indicators.
- Each user is provided with user-specifically tailored information for sound decision-making
- Dashboard interfaces, scheduled PDF reports and business intelligence analysis tools
- Fast and easy implementation and adaptability to the requirements of the various users

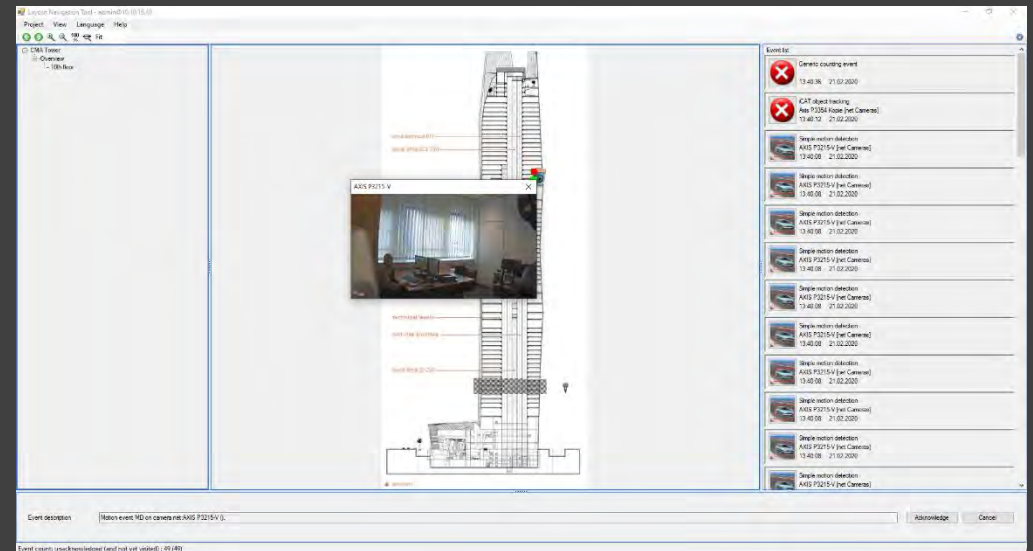


# AGENDA

- 1 Company Profile
- 2 Project References
- 3 VMS & VCA Explained
- 4 3<sup>rd</sup> Party Integration Options
- 5 Netavis VMS Modules
- 6 VMS & VCA Features
- 7 AI Face Recognition
- 8 Smart Data Warehouse Features
- 9 Security Cockpit
- 10 Conclusion

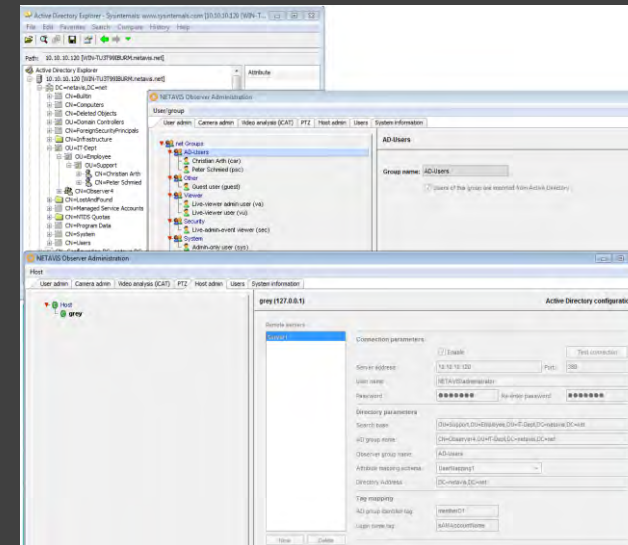


# OBSERVER LAYOUT NAVIGATION



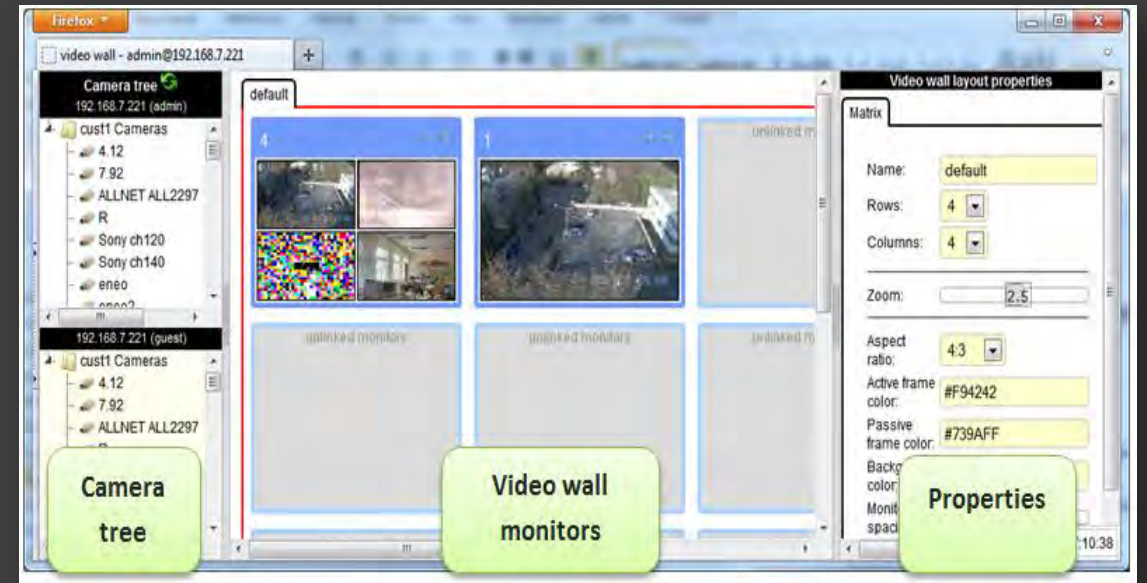
- Administration of camera systems
- Easy navigation of camera systems
- Graphic representation of maps, floor plans etc.

# ACTIVE DIRECTORY INTEGRATION



- For complex and large-scale Active Directory environments
- Administration of users through existing AD/LDAP infrastructure
- User groups are added with adjustable rights

# OBSERVER VIDEO WALL CONTROL



- Efficient control of video walls
- Up to 10x10 screens built from standard IT components
- Flexible control of Observer views and viewports of any client machine



# ABS BANDWIDTH MANAGEMENT



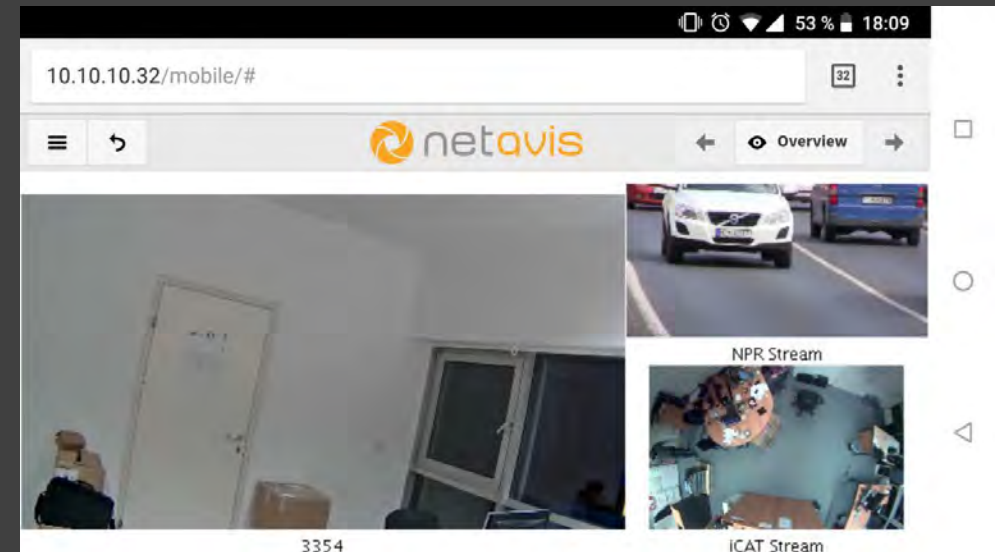
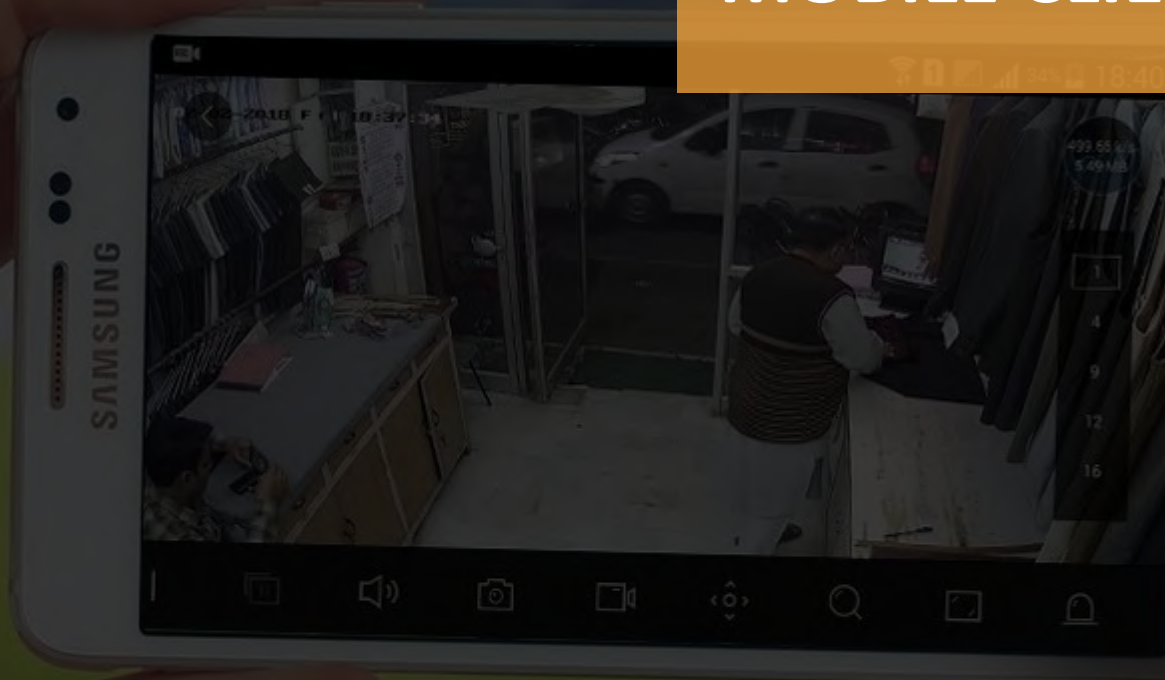
- Reduces and manages bandwidth needed for transmitting video streams
- Dedicate maximal bandwidth
- Independent from cameras, the streaming format and resolution

# ARCHIVE ENCRYPTION



- NETAVIS Archive Encryption allows to encrypt the entire archive
- Access to archive only with decryption key, even if the hard disc was stolen
- Optional encryption of camera-server and server-client-connections included in every edition

# MOBILE CLIENT



- Browser-based application
- Live viewing of up to 6 cameras
- Archive access
- Independent of Operating System

# SMART MOTION DETECTION



- Alarm is triggered by movement into predefined area
- iCAT definitions are adjustable in advance and can be planned
- Different perimeter security settings possible, e.g. for workdays and weekends

# HEAT MAPS



- Different layouts allow for the most intuitive visualization.
- Heat maps uses cameras in defined areas and integrate them to indicate high concentration of customer traffic and engagement areas.
- Maps can be based on specific time windows or integrated over a period.

# PEOPLE COUNTING



- NETAVS iCAT detects and counts people in defined areas
- Virtual tripwire detects the direction of the object in the video stream
- Extremely low error rate – minimal double counting
- Added value for existing installations

# OBJECT DETECTION, LOITERING DETECTION



- Detects moving objects, that stop in a defined area
- Alarm per system event, SMS, and email notification

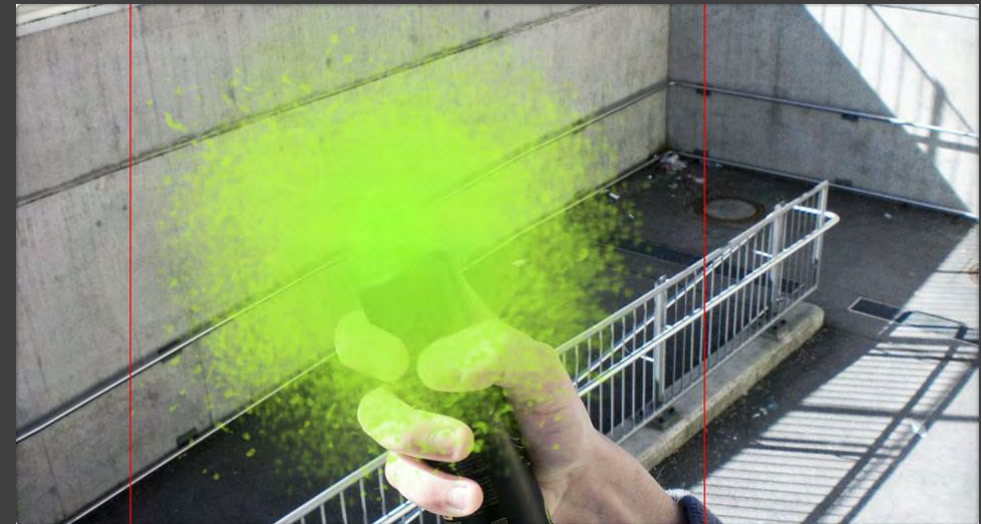
# DYNAMIC PRIVACY MASK



- Dynamically protects peoples' privacy
- Freely configurable
- Can be turned off when required (e.g. via panic button or time-schedule)
- Useful in security and retail applications



# iCAT SABOTAGE DETECTION



- Detects camera sabotage:
  - Defocusing
  - Covering
  - Moving
- Documentation of camera sabotage
- Optional alarm

# iCAT NUMBER PLATE RECOGNITION



- Input for statistical data
- NPR list management & events: search and export, real time actions for individual vehicles
- Over 70 countries including Saudi Arabia
- Seamlessly integrated in NETAVIS Observer, no extra server

# iCAT FACE DETECTION



- Detects and counts faces
- Estimates gender
- Estimates age group
- Measures Attention time
- Direct data export

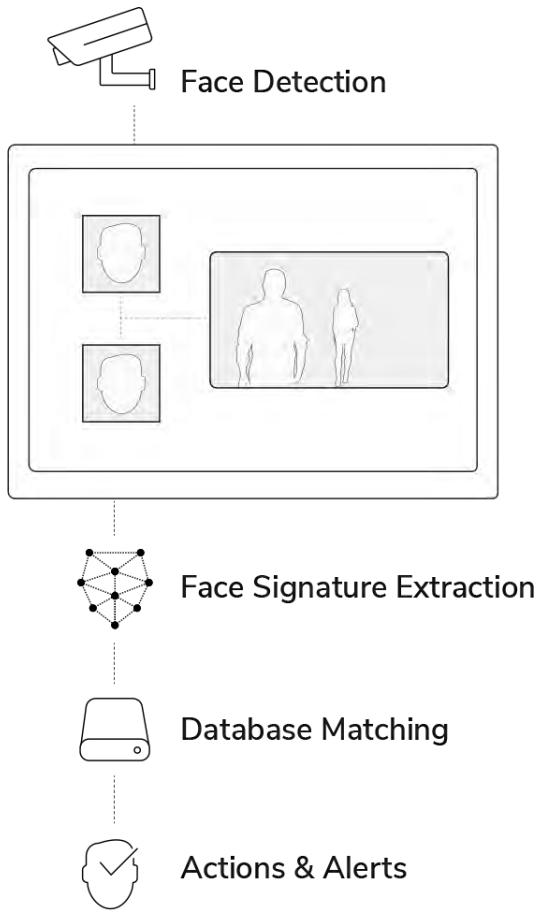
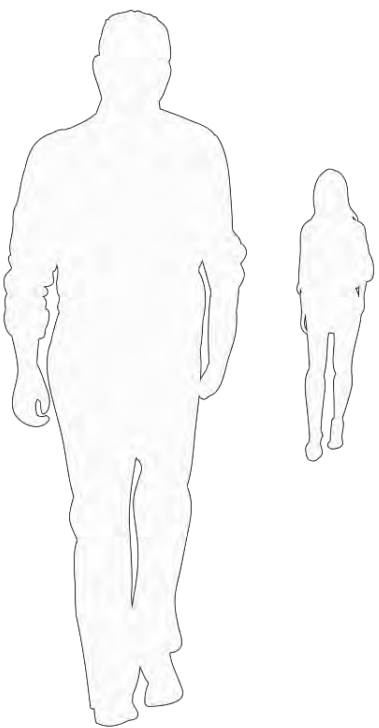
# AGENDA

- 1 Company Profile
- 2 Project References
- 3 VMS & VCA Explained
- 4 3<sup>rd</sup> Party Integration Options
- 5 Netavis VMS Modules
- 6 VMS & VCA Features
- 7 AI Face Recognition
- 8 Smart Data Warehouse Features
- 9 Security Cockpit
- 10 Conclusion



Watch on 

# ACCURATE FACIAL RECOGNITION



## Live Gender, Age and Mode Analytics



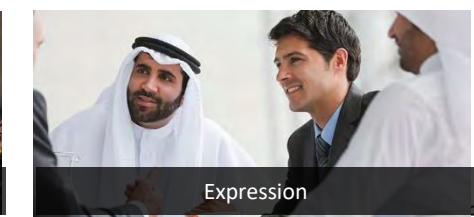
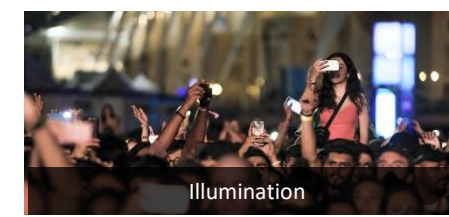
## Wild Face



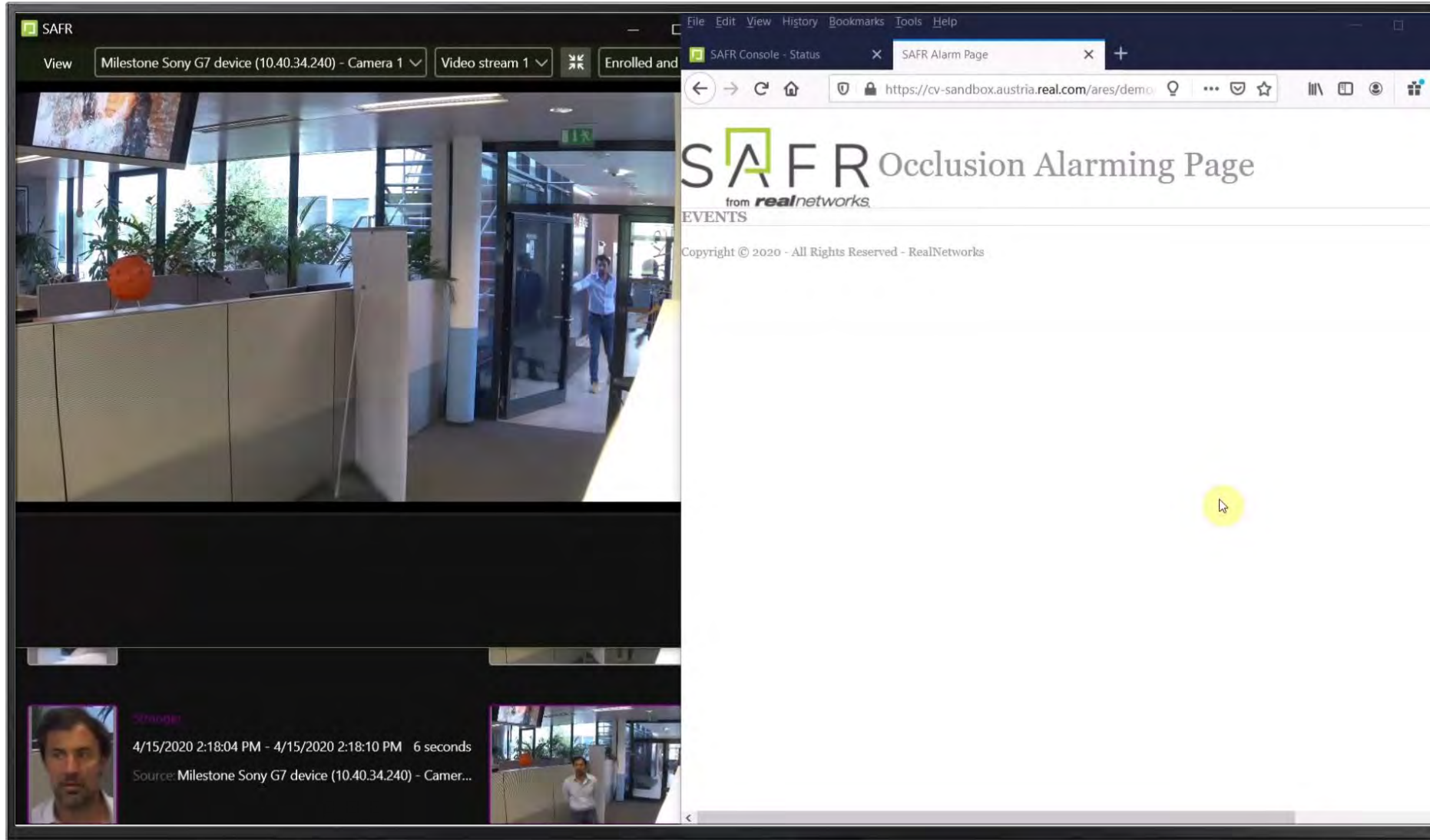
## Visa Face



## Performance in Adverse Condition

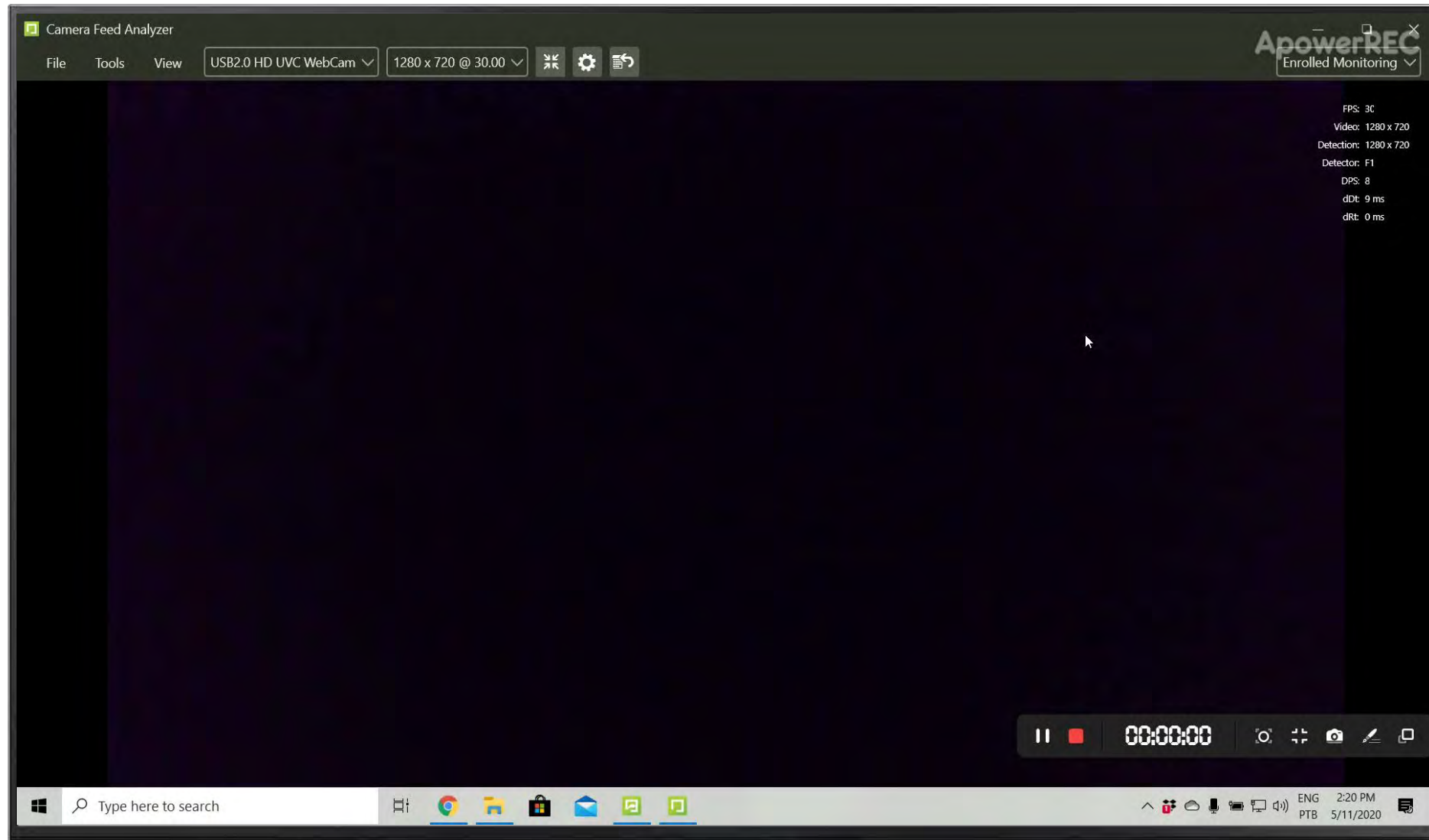


# OCCLUSION ALARMING



The image shows a computer monitor displaying a video stream and a web browser. The video stream is from a Milestone Sony G7 device (10.40.34.240) - Camera 1, showing a man walking through a hallway. The browser is displaying the SAFR Occlusion Alarming Page, which includes the SAFR logo, the text "Occlusion Alarming Page from realnetworks", and "EVENTS". A yellow circle highlights a specific area in the video stream, indicating an occlusion event. The browser address bar shows the URL: https://cv-sandbox.austria.real.com/ares/demo. The browser tabs include "SAFR Console - Status" and "SAFR Alarm Page".

# FACIAL RECOGNITION WITH MASK DETECTION





# AGENDA

- 1 Company Profile
- 2 Project References
- 3 VMS & VCA Explained
- 4 3<sup>rd</sup> Party Integration Options
- 5 Netavis VMS Modules
- 6 VMS & VCA Features
- 7 AI Face Recognition
- 8 Smart Data Warehouse Features
- 9 Security Cockpit
- 10 Conclusion



- 1 AI-based analytics are more reliable than human operators.
- 2 Smart rule engine can trigger automatic responses based on analytics-based alerts.
- 3 Automated data collection provides input for process improvements.
- 4 AI systems will improve and provide new functionalities in the future.
- 5 Automated optional dashboards and reports for security management.



## The Internet of Things IN RETAIL

The opportunity for IoT in retail is huge, and **getting started with a quick, high-value project is easier than you think.**

IoT is more than just the "Things" of connected devices, products or sensors. IoT can connect systems, providing unified visibility, real-time decisions, and deeper insights into customers, competition, product portfolio and performance.



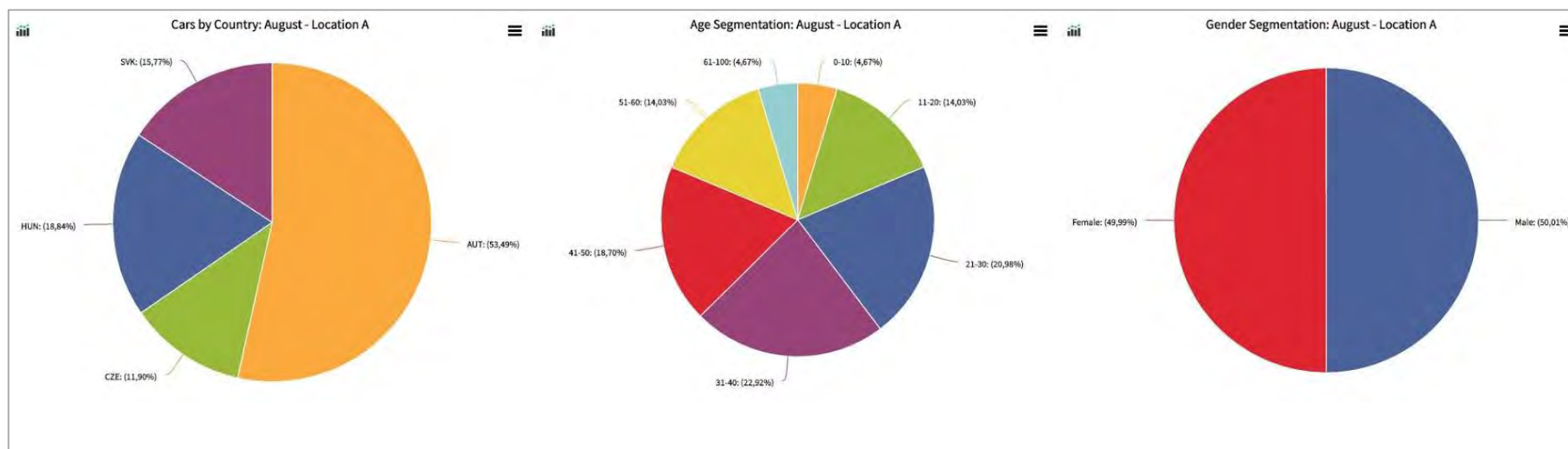
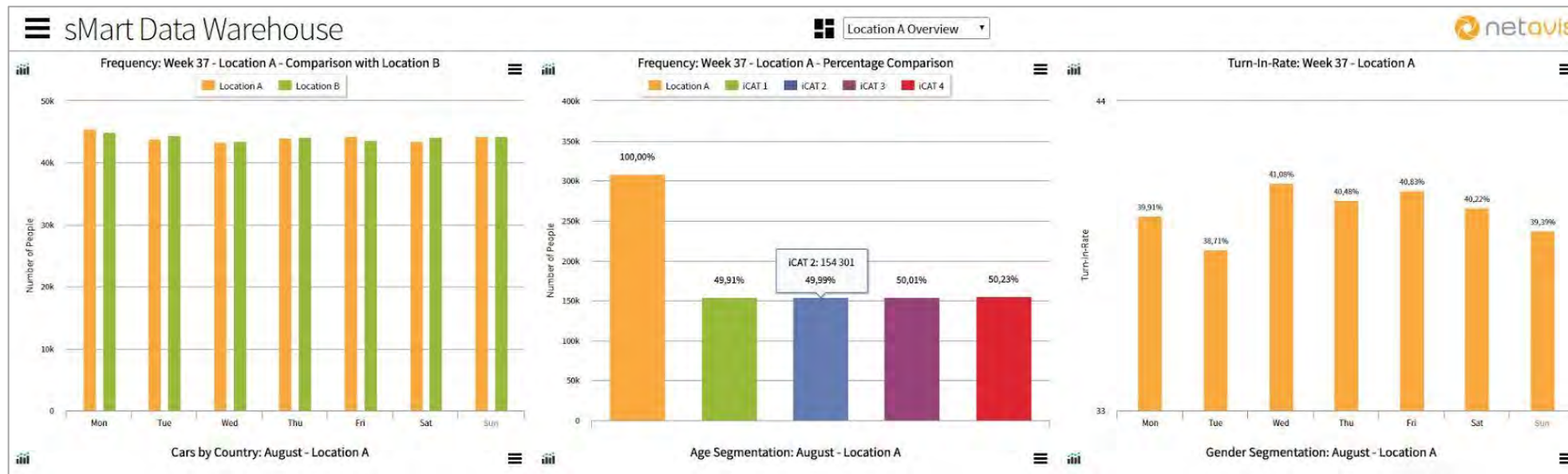
## BY THE NUMBERS

- 56%** of smartphone users plan to use their device while shopping  
ACCENTURE
  - 85%** of shoppers prefer personalized offers reflecting their past shopping behavior  
SYNQUERA
  - 54%** use or would like to use digital touchscreens in-store  
CISCO
  - 61%** would visit and do more shopping in a store with beacon marketing campaigns  
SWIRL
- RETAILER BENEFITS
- CARREFOUR'S BEACON-BASED MARKETING**  
600% new users  
400% more time spent in app  
+50% conversion rates
  - URBAN OUTFITTERS IN-STORE PUSH MESSAGING**  
60-70% engagement rate

The technology is here now to create an incredible shopping experience for your customer and build huge value for retailers.



The technology is here now to create an incredible shopping experience for your customer and build huge value for retailers.



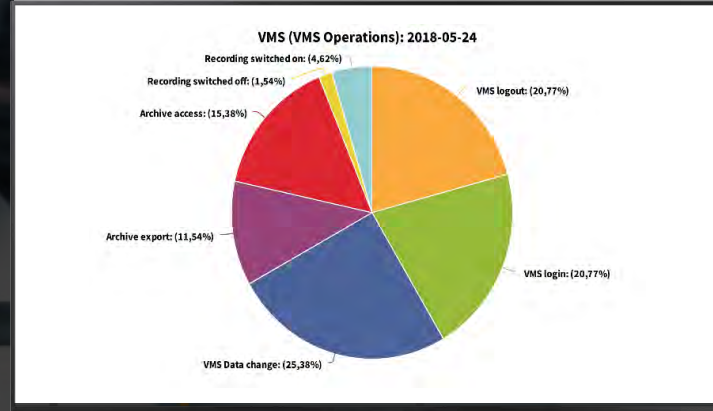
# AGENDA

- 1 Company Profile
- 2 Project References
- 3 VMS & VCA Explained
- 4 3<sup>rd</sup> Party Integration Options
- 5 Netavis VMS Modules
- 6 VMS & VCA Features
- 7 AI Face Recognition
- 8 Smart Data Warehouse Features
- 9 Security Cockpit
- 10 Conclusion



# netavis SECURITY COCKPIT (NSC)

The Security Cockpit is the analysis tool for data from the CCTV system and the integrated video analysis. All security-relevant events can be visualized for detailed analysis in user-specific dashboards and automatically compiled reports. This information provides a constant overview of the system.



## Detailed analysis of security related Observer events

- VMS Status events
- VMS Operations events
- I/O Devices events
- External Devices events



User-specific dashboards



Automatically compiled reports

## NSC Dashboards

- The interface to data
- In-depth analysis of all relevant information
- User friendly customizable dashboards

## Deployment Options

- Hosted on customer organization's IT infrastructure
- NSC as a Service hosted in the cloud

## NSC Reports

- The data can be compiled into passwords protected PDF reports
- System data across time can be compared

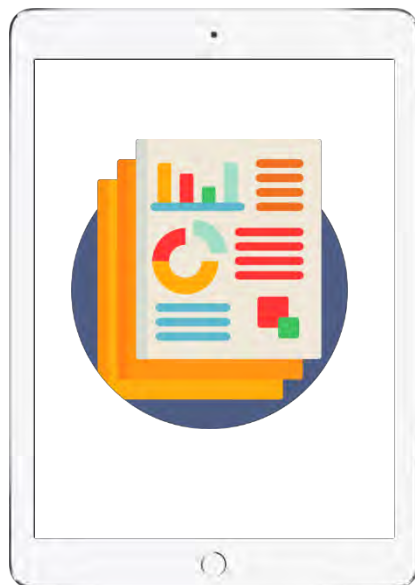


# SECURITY COCKPIT (NSC)

The Netavis Security Cockpit (NSC) is an integral part of the sMart Data Warehouse, which provides a detailed and customizable analysis of security related Observer Video Management events and alarms. Individual adjustable dashboards and personal reports provide clear in-depth analytics at a glance of the data gained through Video Management Systems (VMS) and Video Analytics (VA).



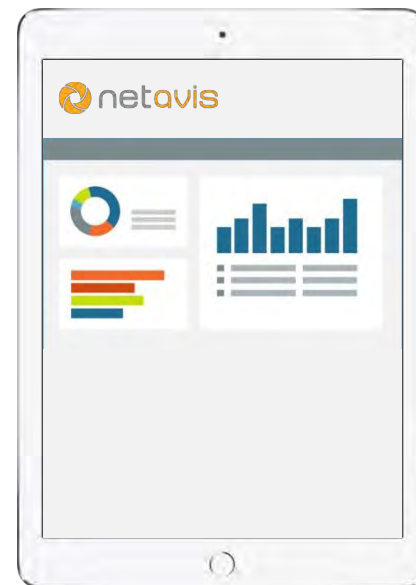
## Customer Added Value



The NSC monitors three different security and GDPR relevant aspects of the installation:

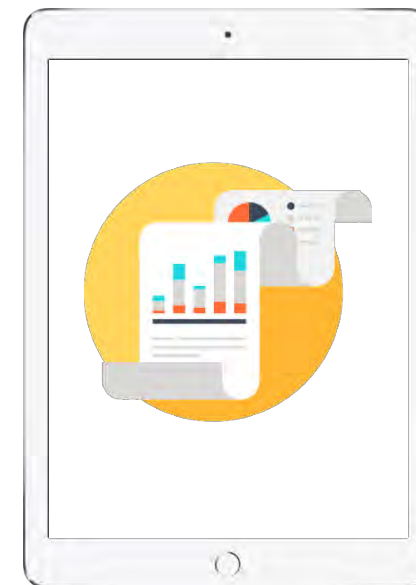
- User Interaction such as logins, archive access and export of video streams
- Security Alarm Information e.g. motion detection or VA
- System Information provides a system alarm overview of the entire installation e.g. camera connection loss.

## User-Specific Dashboards



Dashboards are the interface to the data. They provide an overview and allow a more detailed analysis of all relevant information. Ease of use and customizability help to understand and track relevant information for each user. Various chart options display complex records and comparisons over periods or locations of event categories.

## Automated Reports



All data collected in NSC can be compiled into password-protected PDF reports and regularly sent as e-mail to predefined recipients. The reports are tailored to the individual user and can be used to compare all system data over time (for example: current month compared to last month) or between different locations.



# AGENDA

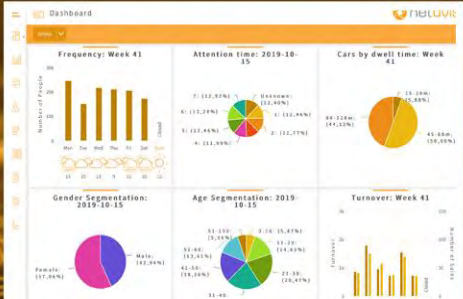
- 1 Company Profile
- 2 Project References
- 3 VMS & VCA Explained
- 4 3<sup>rd</sup> Party Integration Options
- 5 Netavis VMS Modules
- 6 VMS & VCA Features
- 7 AI Face Recognition
- 8 Smart Data Warehouse Features
- 9 Security Cockpit
- 10 Conclusion





# Actionable Intelligence for Improved Security & Operational Efficiency

# Value proposition of Netavis Software GmbH solution



# WHY NETAVIS IS THE BEST VMS PLATFORM FOR BANKS?



Secure and most stable OS



Unlimited camera connectivity



Advance native Analytics



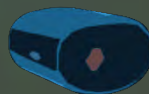
Powerful Dashboard & Health check



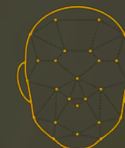
Industry's best business intelligence data analysis



Proven system for large & mega projects in KSA and Globally



Integrated with Fever Detection Cameras



Integrated with world's best ANPR & Face Recognition systems

25

Twenty-five (25) year of data analytics expertise



Extensive integration options with access control, fire and burglar alarm, building management & control systems



**THANK YOU**

