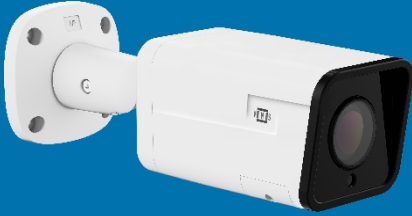


Pro Series



KEY FEATURES

- 8 Megapixel Resolution
- 3840 x 2160:25fps
- 265+ Vcom/H.265/H.264/MJPEG
- Triple Stream
- 2.8/4.0mm Fixed Lens
- 120db WDR
- Micro SD Card Slot
- Corridor Mode
- Alarm I/O
- Audio I/O
- VIR Range: up to 30m (98.4 ft)
- DC12V & PoE
- Weatherproof IP67
- Vandal Resistance IK10

XLight Vpix VIR Vcom



SD Card



Privacy Mask



PoE



Onvif



Multi Streams



Motion Detection



IR



IP67



WDR

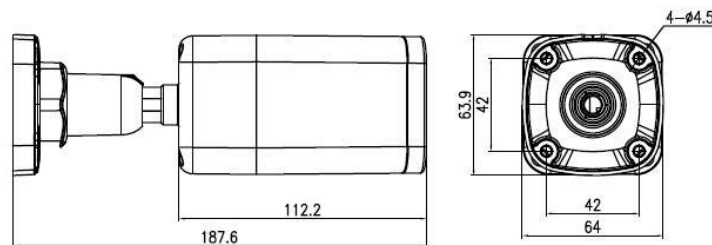


Smart Features

| Model No. | PB8L1R3VTC | PB8L3R3VTC |
|-------------------------|---|--------------------|
| Sensor | 1/2.8" 8.0 Megapixel, Progressive Scan, CMOS | |
| Lens | 2.8mm @ F2.0 | 4mm @ F2.0 |
| Field of View | H: 97.4°, V: 52.5° | H: 89.4°, V: 67.1° |
| Shutter | Auto/Manual, 1/5 ~ 1/20,000s | |
| Minimum Illumination | Colour: 0.003 Lux (F1.4, AGC ON) 0 Lux with IR on | |
| Day/Night | IR-cut Filter with Auto Switch (ICR) | |
| Digital Noise Reduction | 2D/3D DNR | |
| S/N | ≥55 dB | |
| IR Range | Up to 30m (98.4 ft) VIR Range | |
| WDR | 120db WDR | |
| Video | | |
| Video Compression | H.265+ Vcom, H.264, MJPEG | |
| H.264 Code Profile | Baseline Profile, Main Profile, High Profile | |
| Frame Rate | Stream1: 3840 x 2160, 2592 x 1944, 2592 x 1520, 2560 x 1440, 2304 x 1296, 1920 x 1080, 1280 x 720 @ 25/30fps Stream2: D1, VGA, CIF @ 25/30fps Stream3: VGA, CIF, QVGA @ 25/30fps | |
| BLD | Supported | |
| BLC | Supported | |
| XLight | Supported | |
| Corridor Mode | Supported | |
| OSD | Supported | |
| Privacy Mask | Supported | |
| ROI | Up to 8 areas | |
| Motion Detection | Supported | |
| Smart Function | | |
| Intelligent Detection | Support Face, Human, Vehicle Detection, Corridor Mode, Perimeter, Single Virtual Fence, Double Virtual Fences, Loiter, Converse, People Counting | |
| Network | | |
| Protocols | IPv4, IGMP, ICMP, ARP, TCP, UDP, DHCP, PPPoE, RTP, RTSP, RTCP, DNS, DDNS, NTP, FTP, UPnP, HTTP, HTTPS, SMTP, 802.1x, | |
| Interface | | |
| Network | 1 RJ45 10M/100M Base-TX Ethernet | |
| Alarm I/O | 1/1 | |
| Audio I/O | 1/1 | |
| Audio | | |
| Compression | G.711, RAW_PCM | |
| Bit Rate | 8kbps, 16kps, 64kbps | |

| Storage | |
|-------------------------|---|
| Edge Storage | MicroSD, up to 256GB |
| Network Storage | ANR |
| General | |
| Power | DC 12V±25%, PoE (IEEE802.3af) Power Consumption: Max 8.5W |
| Dimensions (L x W x H) | 187.6 x 64 x 64mm (7.39" x 2.52" x 2.52") |
| Weight | 0.6 kg (1.32 lb) |
| Working Environment | -40°C ~ 55°C (-40°F ~ 131°F) |
| Operating Humidity | Less than 90% RH |
| Ingress Protection | IP67 |
| Vandal Resistant | IK10 |
| Product Details | |
| Part Code | PB8L1R3VTC |
| Description | Professional Series, Bullet, 8MP(3840 x 2160:25/30fps) Fixed 2.8mm Lens, VIR Range up to 30m, Audio I/O, Alarm I/O, Micro SD Card Slot, 120db WDR, DC12V/PoE(802.3af), IP67, Built-in AI Function |
| Part Code | PB8L3R3VTC |
| Description | Professional Series, Bullet, 8MP(3840 x 2160:25/30fps) Fixed 4.0mm Lens, VIR Range up to 30m, Audio I/O, Alarm I/O, Micro SD Card Slot, 120db WDR, DC12V/PoE(802.3af), IP67, Built-in AI Function |

DIMENSIONS



ACCESSORIES

Junction Box
Model No.: VN-JB08



Pole Mount Bracket
Model No.: VN-PM01

